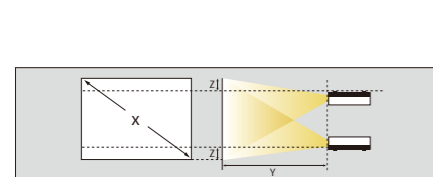


| | | EB-C55W | EB-C35X | EB-C215S |
|----------|---|--------------------------------------|--------------------------------------|----------|
| LCD | RGB | / / | / / | / / |
| | 0.59 (D8) | 0.55 (D8) | 0.55 (D7) | |
| | TFT | | | |
| | 1024,000 dots (1280x800)x3 | 785,432 dots (1024x768)x3 | 480,000 dots (800x600)x3 | |
| | WXGA | XGA | SVGA | |
| | F | 1.58-1.72 | 1.58-1.72 | 1.44 |
| | 16.9 mm-20.28 mm | 16.9 mm-20.28 mm | 16.7 mm | |
| | 1-1.2 (AV mute) | 1-1.2 (AV mute) | 1.0-1.35 (AV mute) | |
| | *1 | 200W UHE (E-TORL) | | |
| | 4000 () | | | |
| () | 33-318 0.9-10.8 | 30-300 0.9-10.8 | 23-350 0.88-10.44 | |
| | 1.3 | 1.48 | 1.45 | |
| | 10.1 | 8.1 | 8.1 | |
| *2x3 | 2800 | 3000 | 2800 | |
| *2x3 | 2240 | 2400 | 2240 | |
| *2x3 | 2800 | 3000 | 2800 | |
| | 3000.1 (16.77) | | | |
| | 13.5 MHz to 162 MHz up to UXGA 60 Hz | 13.5 MHz to 162 MHz up to UXGA 60 Hz | 13.5 MHz to 122 MHz up to UXGA 60 Hz | |
| | 15 kHz to 92 kHz | 15 kHz to 92 kHz | 15 kHz to 69 kHz | |
| | 50 Hz to 85 Hz | 50 Hz to 85 Hz | 50 Hz to 85 Hz | |
| | 13.5 MHz to 162 MHz up to UXGA 60 Hz | 13.5 MHz to 162 MHz up to UXGA 60 Hz | 13.5 MHz to 122 MHz up to UXGA 60 Hz | |
| | 15 kHz to 75 kHz | - | - | |
| | 20/20/50/60 Hz | - | - | |
| *4 | 5° C to 35° C <41° F to 95° F> (20%-80%) | | | |
| | 0 2000 1500 | | | |
| | -10° C to 60° C <14° F to 140° F> (10%-90%) | | | |
| | 100-240 V +/-10%, 50/60 Hz | | | |
| 220-240V | () 270W | | | |
| | () 223W | | | |
| | () 3.3W | | | |
| | () 0.47W | | | |
| & | 100-240 V 50/60 Hz 2.9-1.3 A | | | |
| x x | 295 x 77 x 228 mm | | | |
| | 5.1 lbs. / 2.3kg | | | |

| | | EB-C55W | EB-C35X | EB-C215S |
|--|------------|---------|---------|----------|
| | 3 | 1USB | | |
| | 2W | | | |
| | 1W | | | |
| | 2W | | | |
| | AV mute | | | |
| | ELPDC06 | | | |
| | PC | | | |
| | 5 | | | |
| | +/-30 | | | |
| | +/-30 | | | |
| | Kensington | | | |



| | | EB-C55W | | |
|-------|-------------------------|---------|-----|----|
| | | 4:3 | | |
| X | Y | Z() | | |
| 60"/ | 129cmx81cm 51"x32" | 168 | 202 | 12 |
| 80"/ | 172cmx108cm 68"x43" | 225 | 270 | 15 |
| 100"/ | 215cmx135cm 85"x53" | 281 | 338 | 19 |
| 150"/ | 323cmx202cm 127"x80" | 424 | 509 | 29 |

| | | EB-C35X | | |
|-------|-------------------------|---------|-----|----|
| | | 4:3 | | |
| X | Y | Z() | | |
| 60"/ | 122cmx91cm 47"x35" | 180 | 217 | 10 |
| 80"/ | 163cmx122cm 63"x47" | 241 | 290 | 14 |
| 100"/ | 203cmx152cm 79"x59" | 302 | 363 | 17 |
| 150"/ | 305cmx229cm 120"x90" | 454 | 546 | 25 |

| | | EB-C215S | | |
|-------|-------------------------|----------|-----|----|
| | | 4:3 | | |
| X | Y | Z() | | |
| 60"/ | 122cmx91cm 47"x35" | 177 | 240 | 10 |
| 80"/ | 163cmx122cm 63"x47" | 237 | 321 | 13 |
| 100"/ | 203cmx152cm 79"x59" | 297 | 401 | 17 |
| 150"/ | 305cmx229cm 120"x90" | 446 | 810 | 25 |

| | | EB-C55W | EB-C35X | EB-C215S |
|------------|--|---------|---------|----------|
| 1.8 | | | | |
| 1.8 USB | | | | |
| () | | | | |
| x2 | | | | |
| ELPLP67() | | | ELPIU01 | |
| ELPAF32() | | | ELPDC11 | |
| ELPKS63 | | | ELPDC06 | |
| ELPMB23 | | | | |



EPSON EB-C55W



EPSON EB-C35X



EPSON EB-C215S

| | | EB-C55W | EB-C35X | EB-C215S |
|-------------|--|---------|---------|----------|
| Computer | | | | |
| Monitor Out | | - | - | - |
| Audio out | | - | - | - |
| Video | | | | |
| S-Video | | | | |
| RCA R/L | | | | |
| HDMI | | | - | - |
| USB Type B | | | | |
| USB Type A | | | - | - |
| RS-232C | | - | - | - |

备注:

*1

*2 ISO21118 80%

*3

*4 GB4943.1-2011 2000m 2000m

3LCD

3LCD



SVGA XGA IBM
NSF Analog Devices B.V.

EPSON EB-C215S/C35X/C55W 多媒体液晶投影机



时尚轻巧, 简便易用

- /
- USB
- PC
-



EPSON EB-C215S



EPSON EB-C35X



EPSON EB-C55W

入门级商务投影机



EPSON EB-C215S/C35X/C55W



- WXGA (128x800)
- WXGA
- 30%



USB A

USB
JPEG / BM
P/PNG / GIF



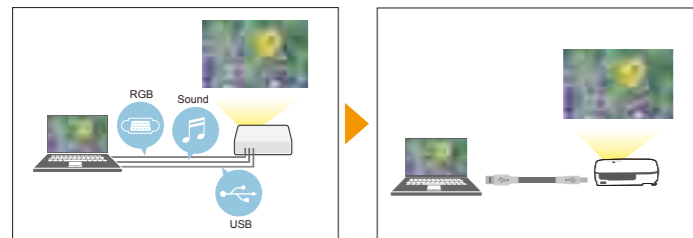
1



USB B

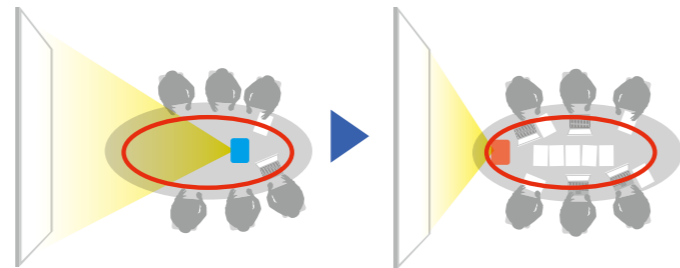
USB
USB

USB

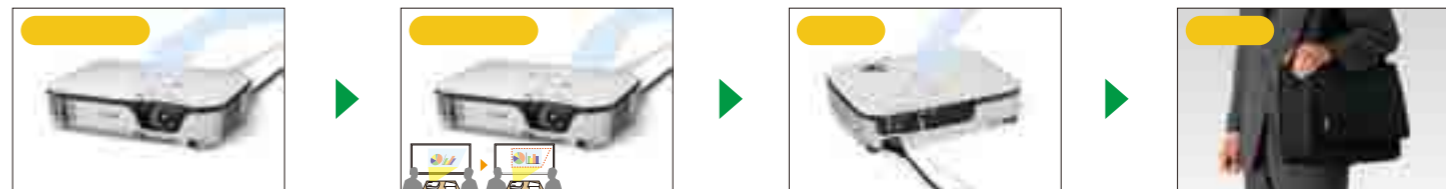


HDMI

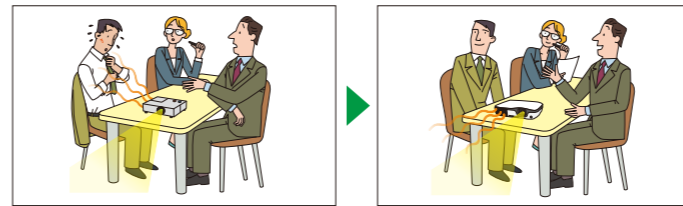
HDMI HDMI



- /
- " Power" Logo 5
- " Beep"



USB



A/V Mute

